



WELCOME TO THE NEWEST COUNTY PARK!

Detweiler Park is the largest of eight public parks owned and managed by the Dauphin County Parks and Recreation Department.

Explore

Visitors are encouraged to explore more than 7 miles of trails winding through varied habitats. Gardens, fields, meadows, evergreen plantations, and mature deciduous forests are some of the ecosystems in this biologically diverse park. Deer are seen frequently as well as a wide variety of birds including turkey, hawks, woodpeckers, and blue birds.

Park Hours and Information

- Trails are open dawn to dusk.
- Parking is courtesy of the Dauphin County Conservation District office at 1451 Peters Mountain Road, Dauphin, PA 17018
- Restrooms are available on the property.
- Park Security: 717-780-6333

Guidelines for Visitors

- Detweiler Park has a leave no trace policy.
- Please put trash in the cans provided.
- Respect park boundaries and adjacent private property.
- Pets must be leashed and their waste must be bagged and deposited in the trash or removed from the park.
- Buildings are closed to the public.
- Trails are for foot traffic only.
- Keep Detweiler Park natural and beautiful.

Detweiler Park Prohibits

- Hunting or trapping
- Removing plants or animals
- Campfires
- Alcohol use

Become a Friend of Detweiler Park!

The Friends of Detweiler Park have a mission to support and promote the preservation, recreation, and conservation of Detweiler Park as a natural area and to increase appreciation and awareness of the environment and its benefits through education. To find out more about the Friends of Detweiler Park and how to become a member, visit www.detweilerpark.org or call 717-780-6701.



Friends of Detweiler, Inc. is a 501(c)(3) nonprofit organization registered with the Commonwealth of Pennsylvania supporting Detweiler Park in Dauphin, PA.

ABOUT THE DETWEILERS

These 400 acres have been enjoyed by four generations of the Detweiler/Stackpole family.

The original home on the property was purchased by Gen. Edward J. Stackpole Jr. eight decades ago as a residence and is no longer a part of the park property. General Stackpole was president of the Telegraph Press and a co-founder with his brother, Albert, of Stackpole Sons, which later became Stackpole Books. "The General" (as he was fondly dubbed by his family and friends) planted all the pines behind the main house and along the trails. He also provided a home in the 1950s for the Dauphin County Anglers and Conservationists on family property along Clarks Creek.

In 1943, his daughter, Mary Frances "Frankie" Stackpole, married Meade D. Detweiler III and they built a modest home on the land adjacent to her mother and father's home. Meade's business interests continued the family tradition in media through WHP radio and television, Commonwealth Communications, and Stackpole Books. Over the years, Meade and Frankie made various additions to their home and land to accommodate their family's love of the outdoors. An avid conservationist, Meade worked diligently to improve tree health, attract wildlife, create a sustainable ecosystem, and maintain walking trails on the property that the family enjoyed on a daily basis. In that same spirit, the family later donated land for the Dauphin County Conservation District's offices.

A 1993 letter found in Meade's files states simply his vision for the future of this land: **"the property should be an area where habitats are preserved and managed in perpetuity for wildlife based on sound ecological principles that demonstrate a strong land ethic..."**

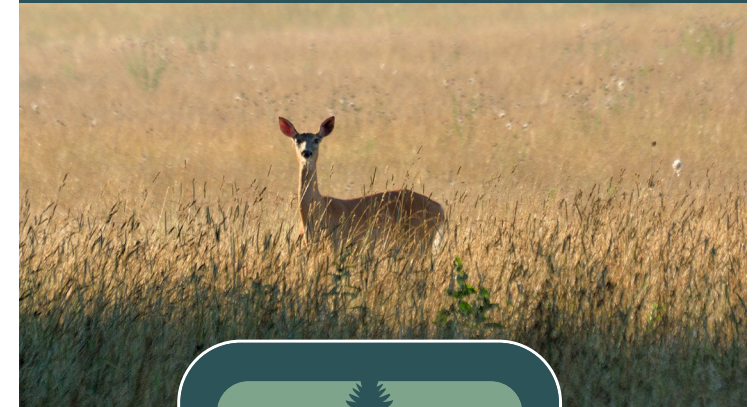
On December 30, 2016, his heirs - Susan Detweiler, wife of the late M. David Detweiler IV; Frances Detweiler Granatino; and Esme Detweiler Freedman - achieved these goals through a combination donation and sale of the property to Dauphin County.



717-599-5188

100 Fort Hunter Road
Harrisburg, PA 17110

DAUPHIN COUNTY COMMISSIONERS:
Justin Douglas | Mike Pries | George P. Hartwick III



Parking available at the
Dauphin County Conservation District:
1451 Peters Mountain Road, Dauphin, PA 17018

DETWEILERPARK.ORG



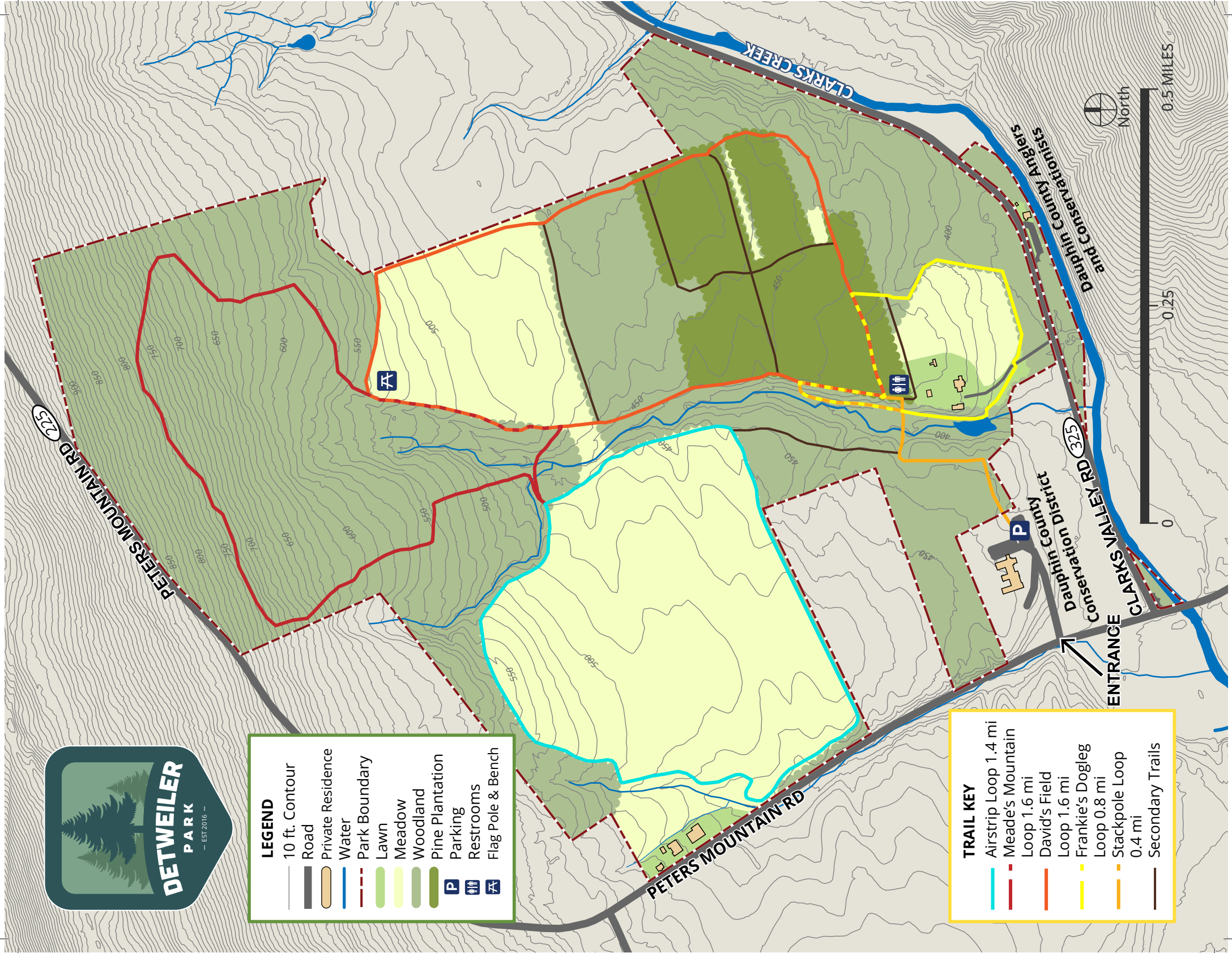
LEGEND

- 10 ft. Contour
- Road
- Private Residence
- Water
- Park Boundary
- Lawn
- Meadow
- Woodland
- Pine Plantation
- Parking
- Restrooms
- Flag Pole & Bench



TRAIL KEY

- Airstrip Loop 1.4 mi
- Meade's Mountain Loop 1.6 mi
- David's Field Loop 1.6 mi
- Frankie's Dogleg Loop 0.8 mi
- Stackpole Loop 0.4 mi
- Secondary Trails



0.5 MILES

0.25

0